

Product Specification

Product Name	Current transformer	Model	SCT024TS
--------------	---------------------	-------	----------

Characteristics: Suspension installation, crimp terminal output. Mechanical strength: the number of switching is not less than 1000 times.

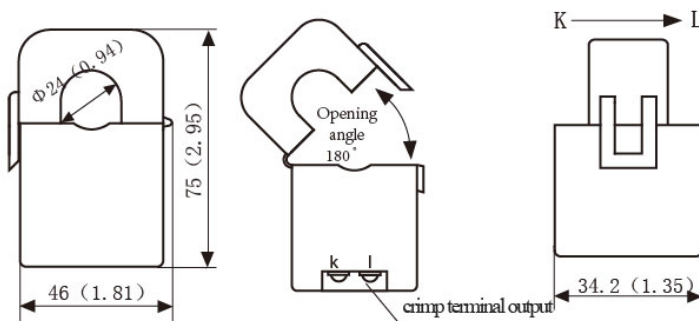
Technical Data

I_{PN}	Rated input	200A
I_{PM}	Max. detection input	240A
I_{OUT}	Rated output	5A
X	Accuracy	$\pm 1\%$
ϵ_L	Linearity	$\leq 0.2\%$
N	Turns ratio	1:40
Φ	Phase shift	
R_L	Max. Sampling resistance	2 Ω
V_{PN}	Work voltage	660V
f	Work frequency	50/60Hz
T_A	Operating temperature	-25..+60 $^{\circ}$ C
T_S	Storage temperature	-30..+90 $^{\circ}$ C
Vd	Dielectric strength, 50 Hz, 1 min	3.5KV



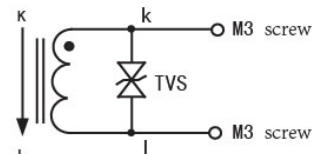
Fire resistance	UL94-V0
Material of core	Silicon steel sheet
Mounting type	Suspension
Weight	204g

Dimension (mm(in). 1 mm= 0.0394 inch)



Front view

Side view



TVS: Transient voltage suppressor

Schematic diagram